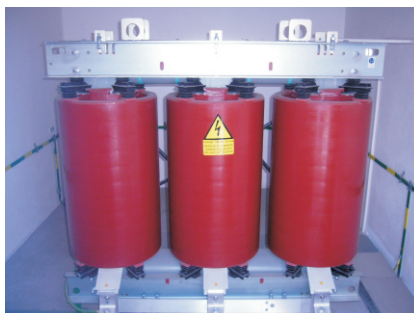




T Machinery a.s.

The company T Machinery a.s. has a new testing polygon, primarily determined for type and piece testing of produced mining devices. Basic component of the testing room is a new transformer station providing a wide range of supply voltage.



Testing Room

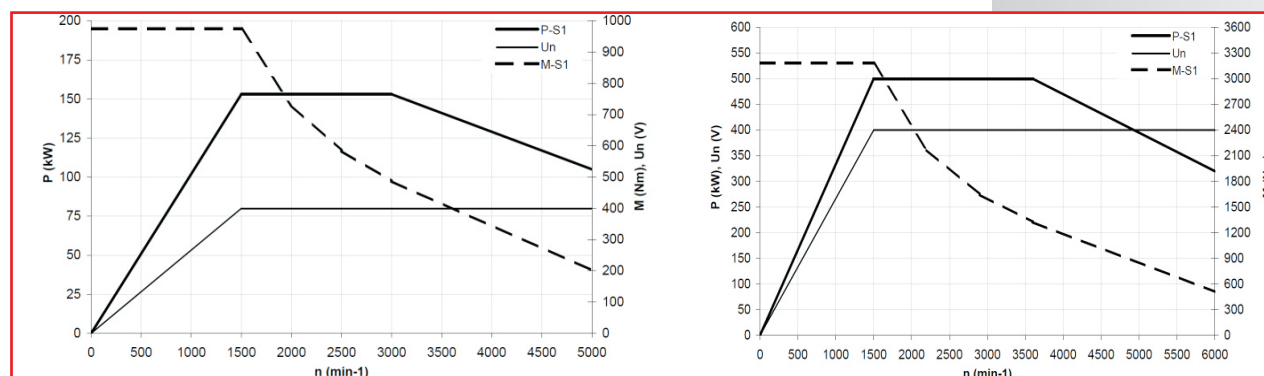
Available power supplies for testing devices:

Nominal voltage [V]	Nominal power [kVA]	Nominal frequency [Hz]	Regulation of nominal voltage [%]	Electric system
400 / 500 / 660	120	50	-5; -10	IT
660	150	0 to 320	180 V to 690 V	IT
1000 / 1140	630	50	-20; -15; -10; -5; +5; +10; +15; +20; +25	IT
3300 / 6000	2500	50	-20; -15; -10; -5; +5; +10; +15; +20; +25	IT

Motor load and gear system can be done by the help of two asynchronous dynamometers recuperating energy of the testing system back to power supply network. Both dynamometers are equipped with digital control unit enabling operation in drive regime or load and revolution or moment coupling. Control unit is connected to PC which contains program for analysis and measured data processing.

Technical parameters of dynamometers:

Parameter	Dynamometr ASD P153	Dynamometr ASD P500
Nominal power	153 kW	500 kW
Revolutions	1500 - 3000 min ⁻¹	1500 - 3600 min ⁻¹
Moment	974 - 487 Nm	3182 - 1326 Nm
Maximal revolutions / power	5000 min ⁻¹ / 105 kW	6000 min ⁻¹ / 320 kW



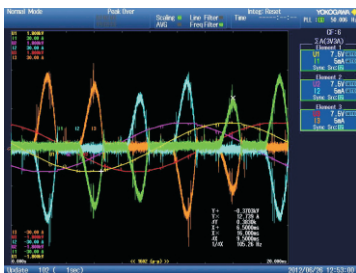
Working features of dynamometer ASD P153 (left) and dynamometer ASD P500.



Testing Room

[illegible]

YOKOGAWA WT 1800



The company T Machinery a.s. offers both processing of technical tests according to own customer's requirements, and also direct lease of the whole working place to professional public.